

Sistemi/Systems

**Orbite**

**Radiale**

Sospensioni/Suspended

**Barra**

**Lumiera**

**Mini**

**Sciame**

Corpi illuminanti/Lighting bodies

**Bucaneve**

**Campanella**

**Crespella**

**Dardo**

**Diatomea**

**Farfalla**

**Filo d'angelo**

**Fredginger**

**Galaverna**

**Gemma**

**Ghiacciolo**

**Goccia**

**Lilium**

**Medusina**

**Mozzarella**

**Nuvola**

**Ostrica**

**Ovosodo**

**Pasticcini**

**Patata**

**Pendilla**

**Pendolino**

**Popone**

**Seppiolina**

**Sigaretta**

**Sigaro**

**Strale**





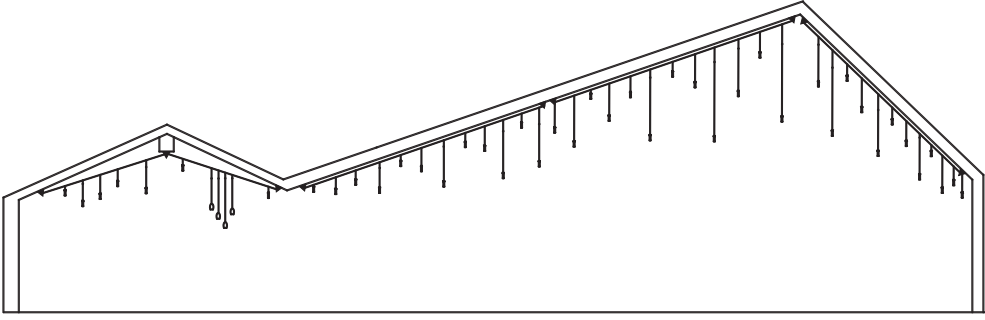
'Orbite' è un sistema per l'illuminazione che si ispira alla struttura di una porzione di Universo dove corpi eterogenei per forma, dimensione e luminosità restano sospesi e apparentemente immobili. Ricostruire in piccolo una 'porzione di Universo' in un ambiente chiuso riserva un sorprendente valore di interazione con l'architettura ed esprime la capacità di offrire emozione. Inoltre consente di ottenere un'illuminazione razionale ed energeticamente ponderata.

# ORBITE

design Pepe Tanzi, 1988

'Orbite' is a lighting system inspired by the structure of a slice of Universe, in which bodies that are of different shape, size and brightness are suspended in the space appearing motionless, still. Recreating this 'small portion of universe' in a closed environment, is very effective in terms of architectural interaction, and is sure to make a big impact.

The correct lighting obtained ensures proper energy consumption.









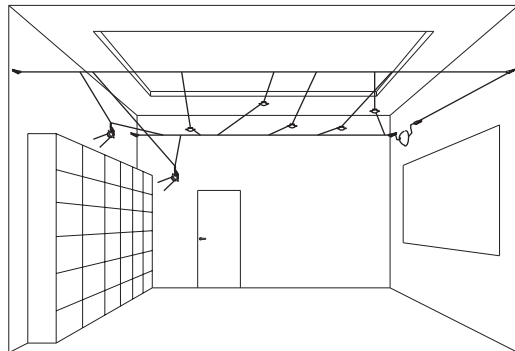


Restaurant in medieval town Candelo, Italy















Relais Masseria Capasa (LC) - project: Studio Fracasso - photo: Adriano Pecchio







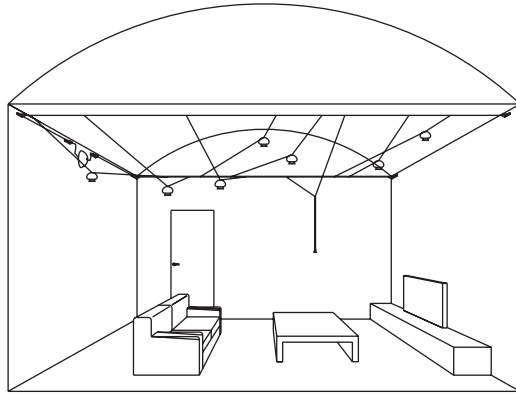






LAMPADINE LED 12V

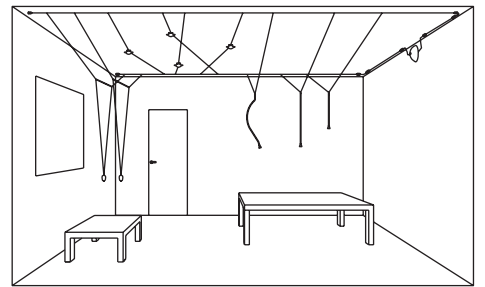






LAMPADINE LED 12V







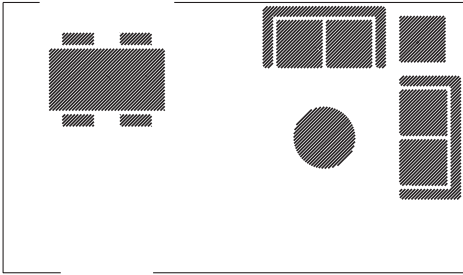




1.

Scegli la zona  
che vuoi illuminare

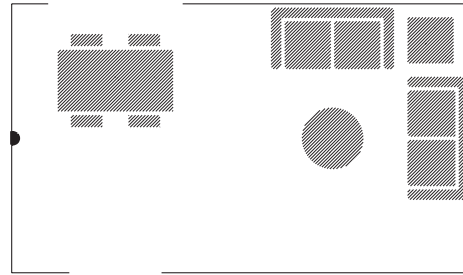
Choose the area  
you wish to light



2.

Individua il punto luce a cui  
collegare il rosone

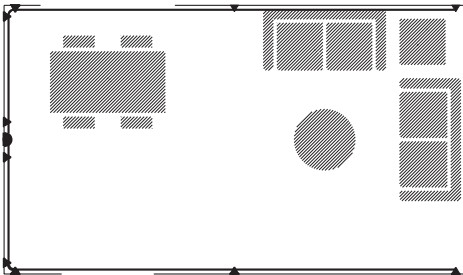
Locate the power supply to which  
you will connect the rose



3.

Definisci il perimetro  
utilizzando i cavi portanti

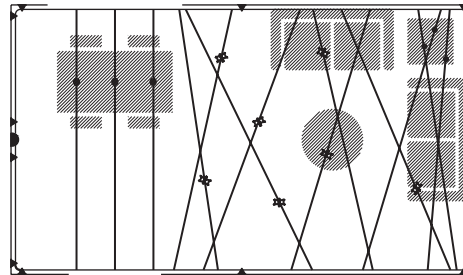
Define the perimeter  
using the supporting cables

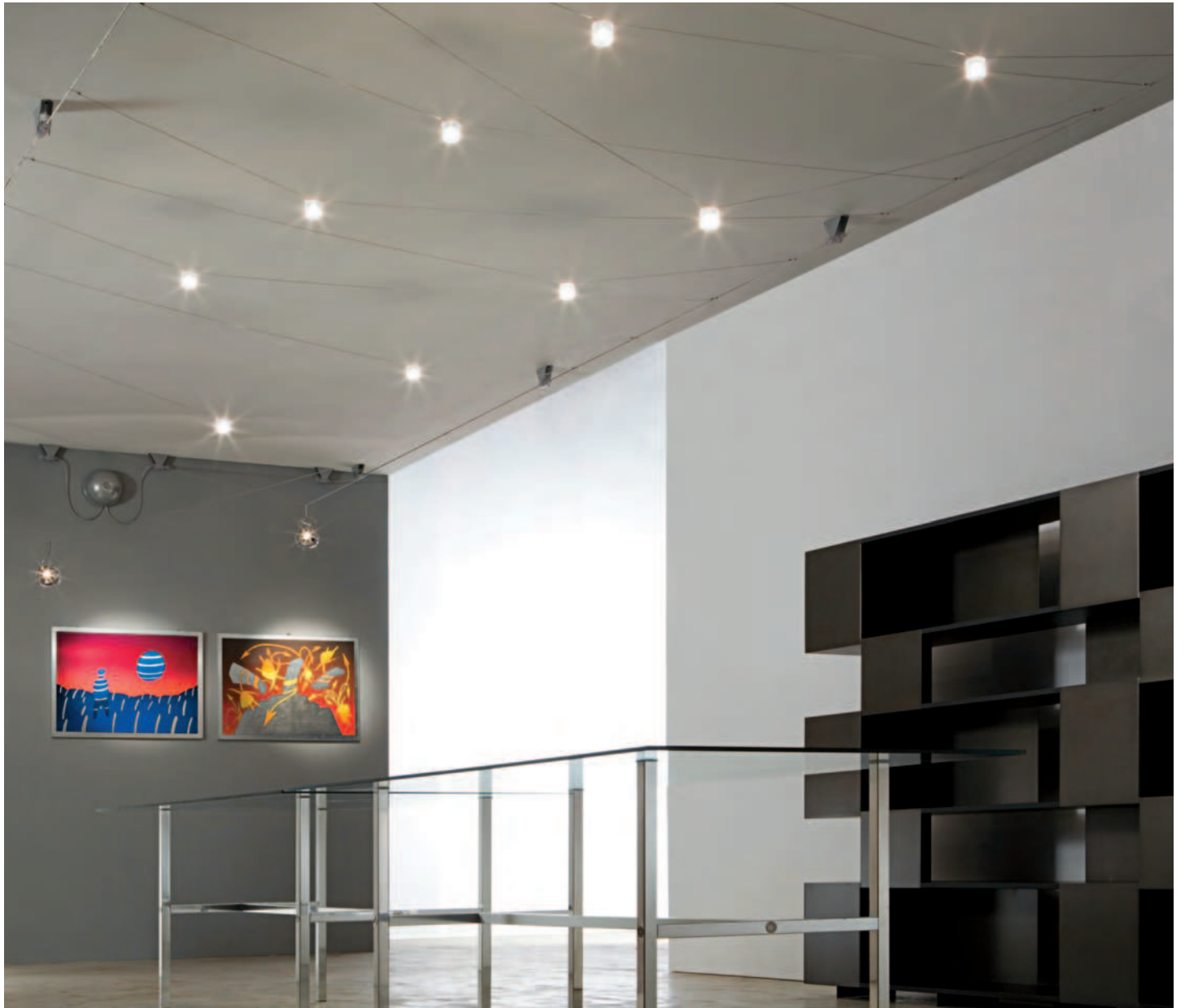


4.

Scegli e posiziona a tuo  
piacere i corpi illuminanti

Choose and place  
the lighting bodies





LAMPADINE LED 12V